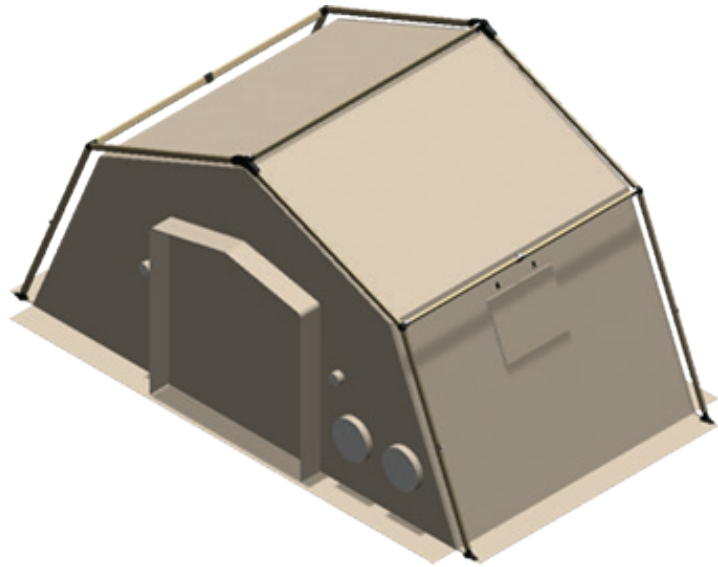




TM SERIES TM18

The latest technology and design in rapid deploying shelters currently fielded with US military forces. UTS expeditionary military shelters benefit from an innovative system of deployment. The rapidly-deployable soft shelter incorporates a unique external folding-frame design and an internal liner system integrated with the outer fabric. The ease and speed with which our shelter systems deploy saves time and simplifies training. The innovative frame design and rope-and-pulley system provides a simple and easy to remember set-up procedure. Shelter setup times range from 5-15 minutes for all TM series shelters.



*Shelter shown without thermal fly.

USED FOR



MEDICAL FACILITIES



BASECAMPS & BILLETING



CBRN DEFENSE



DECON



COMMAND & CONTROL

TESTED FOR



WIND



SNOW LOAD



DRIVING RAIN



BLACKOUT



ERECT & STRIKE

FEATURES & BENEFITS

- **EASE OF DEPLOYMENT:** All of the TM shelter models are rapid-deploying with average setup times between 5-15 minutes with minimal people and no tools or ladders. The setup procedures are simple and intuitive and require a minimal amount of training. This is all made possible because of the unique rope and pulley system. The systems allow the frame to be setup first allowing the fabric to be hoisted into place below the frame, eliminating the requirement to lift both the frame and fabric simultaneously. Having the frame external to the outer fabric allows for a thermal fly to be installed on top of the frame which creates additional environmental protection.
- **DURABILITY:** All aspects of the shelter are designed to be rugged and durable. The frame is built with robust components that are high strength offering trouble free setup. The fabric components are manufactured using the highest quality products with the most modern fabrication techniques.
- **PROVEN:** UTS shelters meet or exceed all DOD standards for environmental performance. Testing has been successfully completed for snow load, wind load, driving rain, blackout, durability, sand, dust, and salt fog.
- **MISSION READINESS:** Each UTS shelter comes equipped with integral ECU ducting, electrical outlets and remain inside the shelter during takedown and pack out. The optional lighting can also be left integral to the shelter during takedown and pack out.
- **MODULAR:** The shelters come in various sizes that can be interconnected to create larger complexes to meet the mission needs.
- **THERMAL EFFICIENCY:** The shelter has a very energy efficient design with a standard liner and thermal fly. Additional thermal efficiency can be achieved using the optional insulated liners.
- **SUPPORT:**
 - On sight delivery + free training
 - Refresher training
 - 24/7 Support in the field

©2023 UTS Systems, LLC

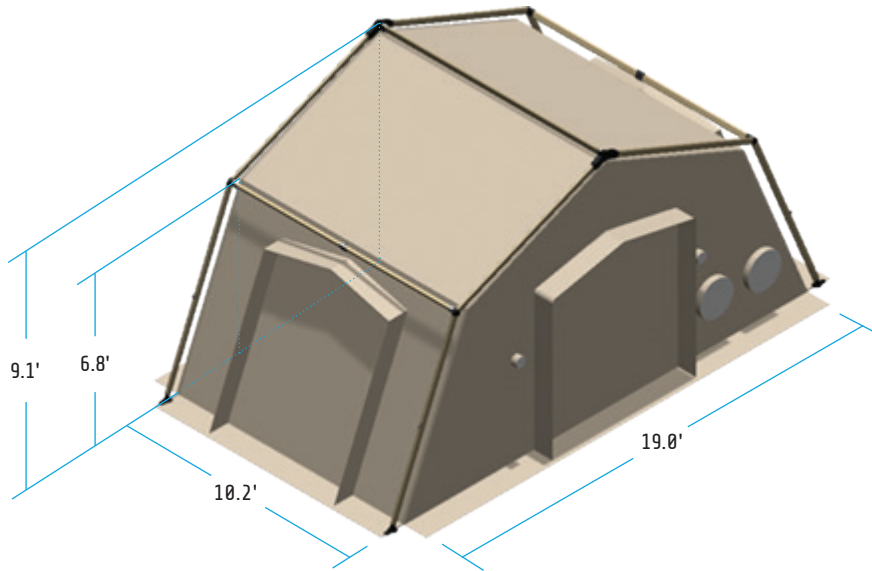
Current as of July 2022. Information subject to change without notice.

UTS Systems, LLC | 6051 North Lee Hwy, Fairfield, VA 24435

850.226.4301 | sales@uts-systems.com

uts-systems.com

DIMENSIONS



NSN ORDERING #

2 DOOR

DT: 8340-01-583-4250

OD: 8340-01-579-1400

4 DOOR

DT: 8340-01-691-9525

OD: 8340-01-691-9978

		2 DOOR	4 DOOR
PART NUMBERS	DESERT TAN	UTM18A1-DT	UTM18B1-DT
	O.D. GREEN	UTM18A1-OD	UTM18B1-OD
	COYOTE BROWN	UTM18A1-CB	UTM18B1-CB
INTERIOR DIMENSIONS	19.0 x 10.2 x 6.8 Eave, 9.1 Peak		
USEABLE FLOOR SPACE	194 ft ²		
DEPLOYMENT TIME	Setup with 2 people in 3-5 minutes		
STRIKE TIME	Strike with 2 people in 3-5 minutes		
PORTABILITY/WEIGHT (IN BAGS)	Tent Fabric: 205 lbs (incl. Insulated Liner, Floor & Repair Kit) Roof Frame: 127 lbs Side Arches: (incl. with Roof Frame) Thermal Fly: 69 lbs Staking Kit: 28 lbs Total Weight: 429 lbs		
PACKED DIMENSIONS (L X W X H INCHES)	Tent Fabric: 78 x 30 x 18 Roof Frame: 92 x 20 x 8 Side Arches: (incl. with Roof Frame) Thermal Fly: 35 x 27 x 5 Total Volume: 36 ft³		
COMPLEXING	End Doors, End Walls, (optional) Side Doors		
PASS-THROUGH PORTS/ SLEEVES	ECU/Cable ducts on both end walls		
WINDOWS	Standard		
SHELTER MATERIAL & SUB-FLOOR	Meets MIL-PRF-44103		
HANGING MECHANISMS	100 lbs each; Interior Hang Points		
INTERIOR ELECTRICAL	Standard Equipment; Interior shelter cord with lighted triple tap		